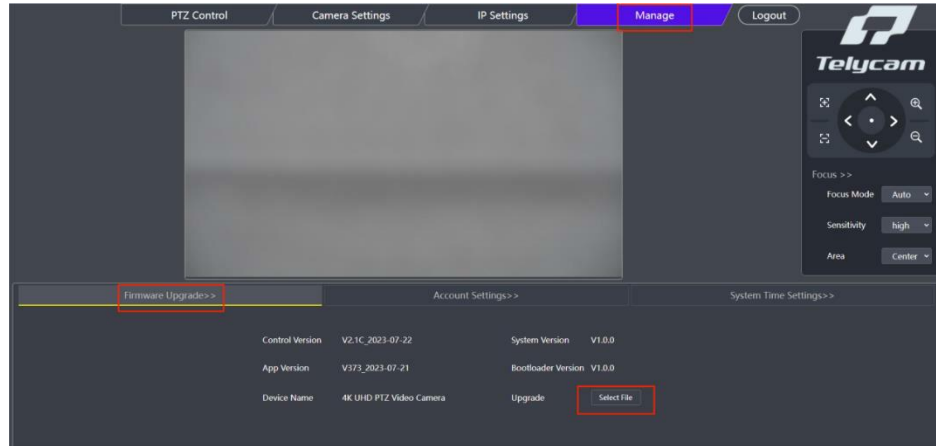


# Telycam WebUI Firmware Update & Upgrade Guide

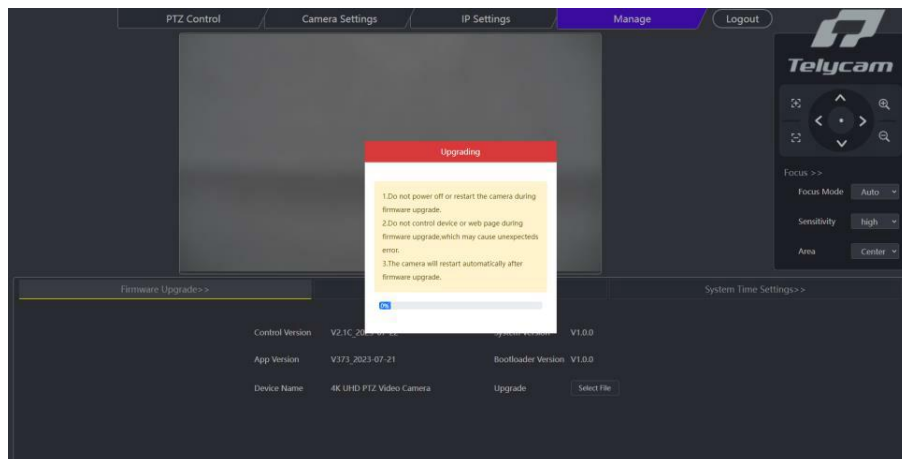
## Step 1:

Log in to the WebUI (default IP address: 192.168.1.188), navigate to the "Manage" interface, and click on "Firmware Upgrade".



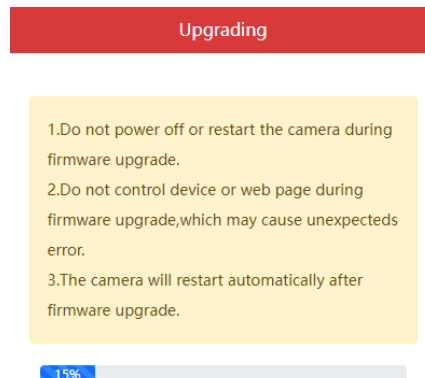
## Step 2:

Click "Select File" to choose the program (bin file). Please double-check that your camera model matches the selected file to avoid any issues.

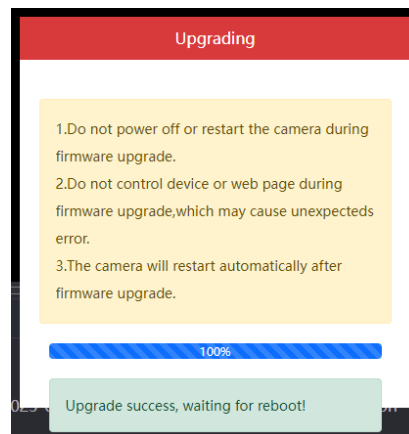


**Step 3:**

During the upgrade process, do not power off the camera. Interrupting the upgrade may cause issues.

**Step 4:**

Wait for the upgrade to complete. Once the upgrade is successful, the camera will automatically reboot.



**Congratulations!** You've successfully upgraded your Telycam PTZ camera.

**Note:**

If you have any questions about upgrading the firmware, please reach out to us at [sales@telycam.com](mailto:sales@telycam.com) or [support@telycam.com](mailto:support@telycam.com) for assistance.